

LG Water Solutions

Data Sheet



Brackish Water Reverse Osmosis (RO) Membranes

LG BW 4040 R



Overview

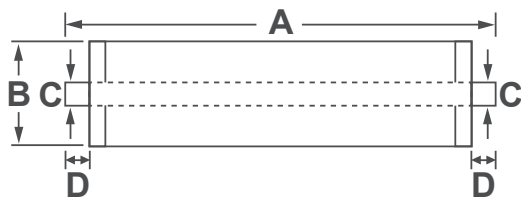
LG Chem's NanoH₂O™ brackish water RO membranes serve various municipal and industrial applications. LG BWRO, all incorporated with innovative Thin Film Nanocomposite (TFN) technology, is offered in industry standard configuration easily fit into existing or new RO plants. Global clients in more than 50 countries have already experienced LG BWRO and superior quality and performance of the membranes lead to repeat customers.

LG BW R membranes offer a combination of high productivity, consistency, and durability in brackish water and wastewater applications.

Product Specifications

Active Membrane Area ft ² (m ²)	Permeate Flow Rate GPD (m ³ /d)	Stabilized Salt Rejection (%)	Minimum Salt Rejection (%)	Feed Spacer (mil)
85.0 (7.9)	2,500 (9.5)	99.6	99.3	28

Test Conditions : 2,000ppm NaCl @ 25°C(77°F), 225psi (15.5bar), pH 8, Recovery 15%. Permeate flows for individual elements may vary +/- 20%.



A mm (in.)	B mm (in.)	C mm (in.)	D mm (in.)	Weight kg (lbs.)
1,016 (40)	100 (3.9)	19 (0.75)	29 (1.1)	4.0 (8.8)

Operating Specifications

For more information and operating guidelines, visit www.LGwatersolutions.com

Max. Applied pressure	600psi (41bar)
Max. Chlorine concentration	< 0.1 ppm
Max. Operating temperature	45°C (113°F)
pH Range, Continuous (Cleaning)	2-11 (2-12)
Max. Feedwater turbidity	1.0 NTU
Max. Feedwater SDI (15 mins)	5.0
Max. Feed flow	16gpm (3.6m ³ /h)
Max. Pressure drop (ΔP) for each element	15psi (1.0bar)

The information and data contained herein are deemed to be accurate and reliable and are offered in good faith, but without guarantee of performance. LG Chem assumes no liability for results obtained or damages incurred through the application of the information contained herein. Customer is responsible for determining whether the products and information presented herein are appropriate for the customer's use and for ensuring that customer's workplace and disposal practices are in compliance with applicable laws and other governmental enactments. Specifications subject to change without notice. NanoH₂O is the Trademark of The LG water solutions or an affiliated company of LG chem. All rights reserved. © LG Chem, Ltd.

Contact LG Water Solutions

• America +1 424 218 4042 • Europe, Africa except Egypt +34 678 444 020 • Middle East, Egypt +971 50 558 4168
 • Korea +82 2 6924 3943 • China +86 21 60872900 • India +91 9810013345 • South East Asia +65 9749 7471

Rev. J (07.10)

